

# NY REV

Jon Wellinghoff | Partner  
STOEL RIVES LLP |  
jbwellinghoff@stoel.com | [www.stoel.com](http://www.stoel.com)

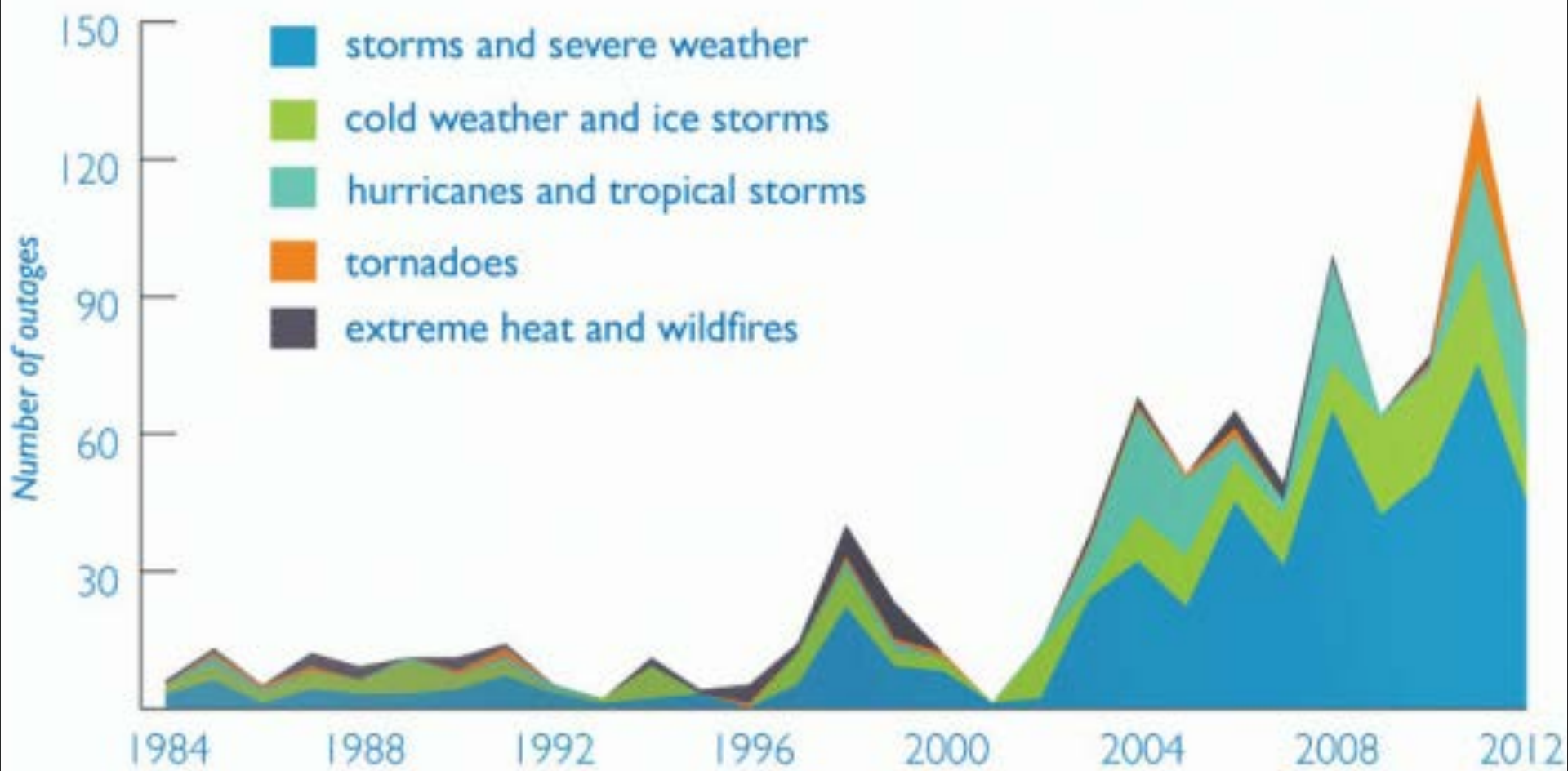
- REV five policy objectives:
  - Customer knowledge & tools to support effective management of total energy bill
  - Market animation and leverage of ratepayer contributions
  - System wide efficiency
  - Fuel and resource diversity
  - System reliability and resiliency

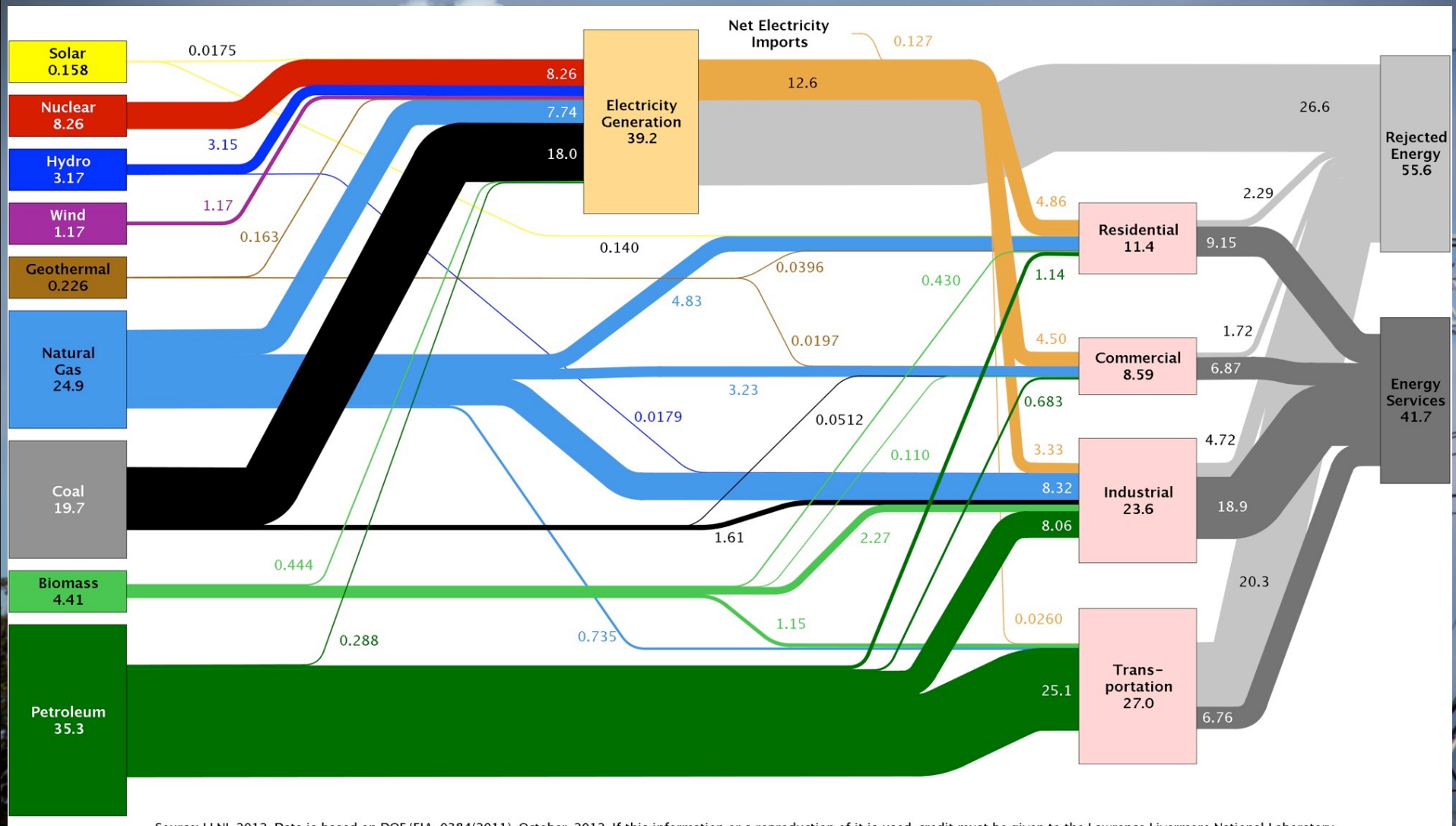
- Our goal is to:
  - Deliver energy services that promote:
    - Choice
    - Innovation
    - Reliability
    - Resilience
  - And Reduce
    - Total Societal Cost
    - Risk



## Extreme Weather Is Causing More Major Power Outages

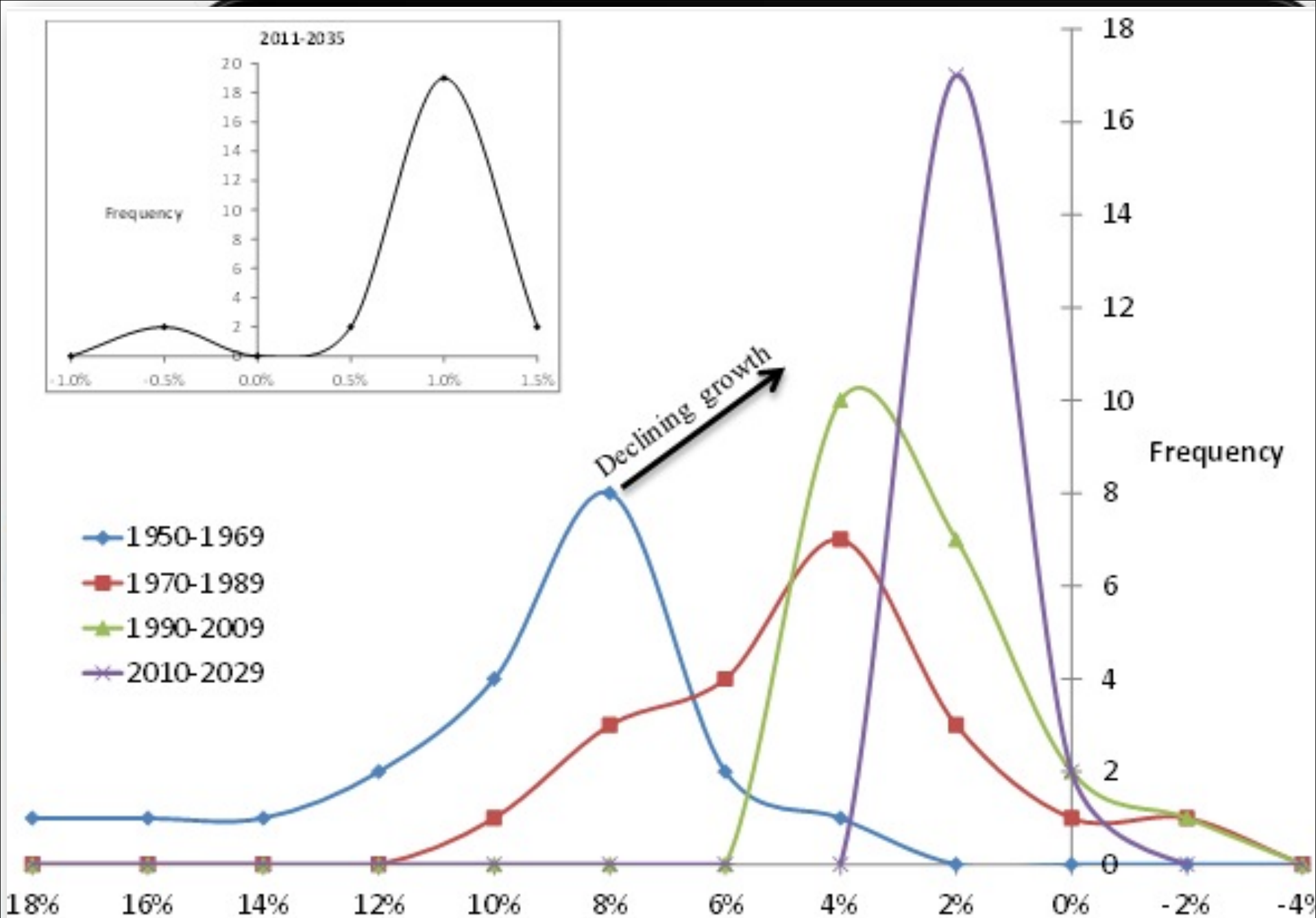
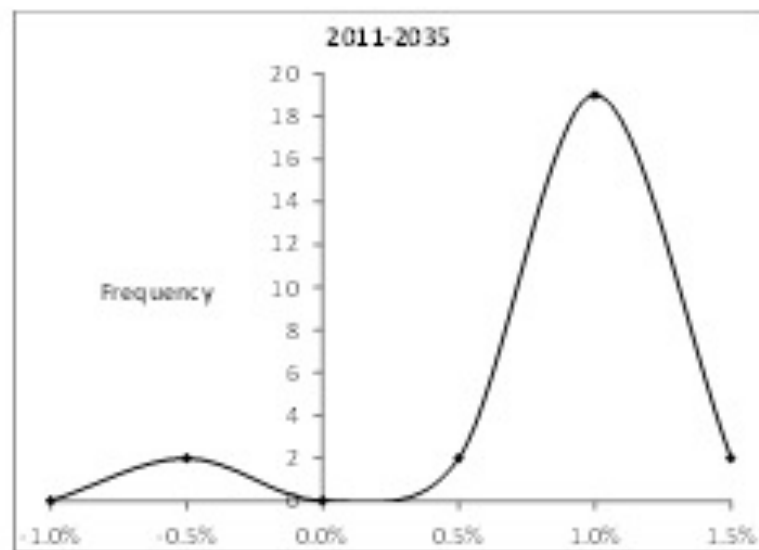
(major = at least 50,000 customers affected)





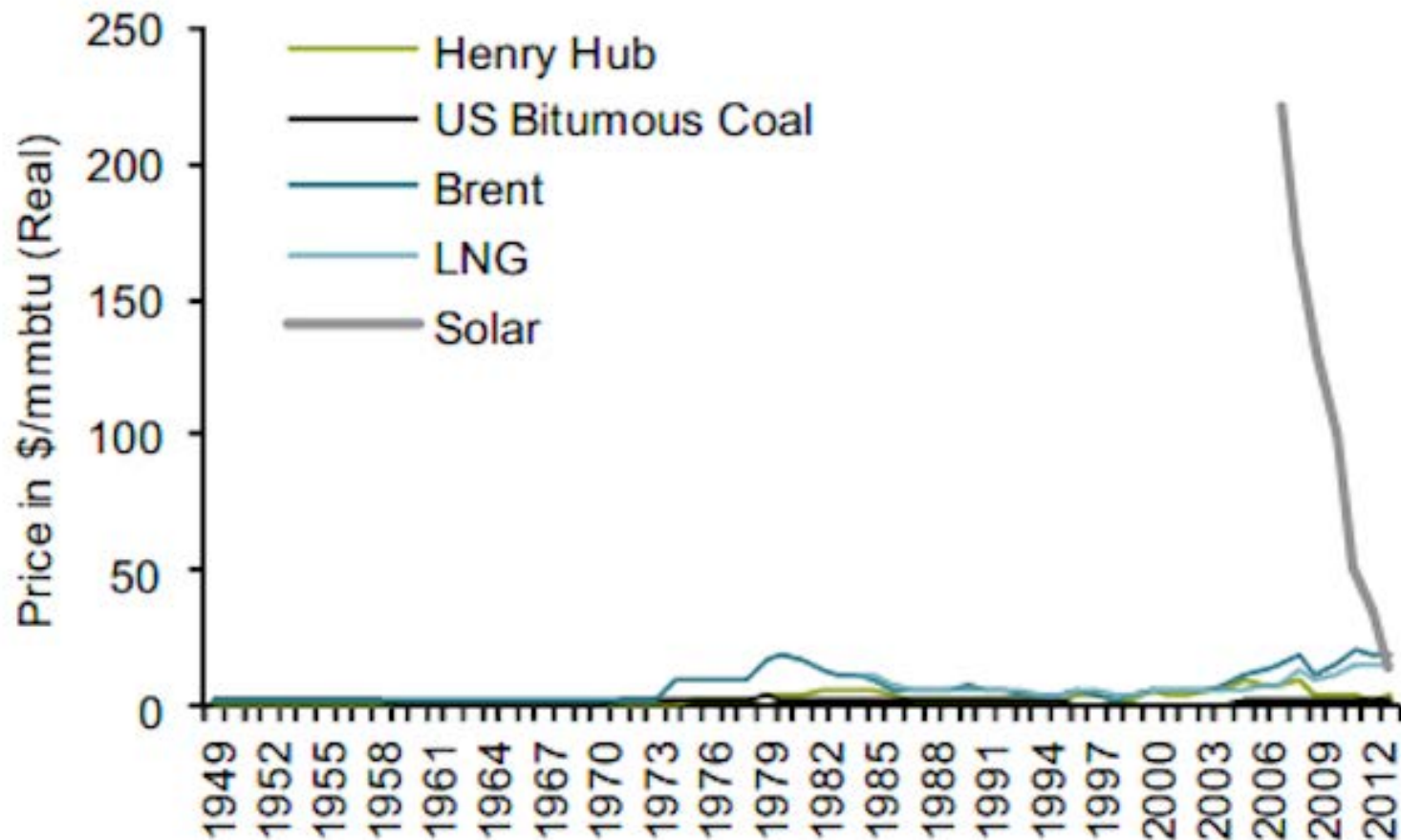
Source: LLNL 2012. Data is based on DOE/EIA-0384(2011), October, 2012. If this information or a reproduction of it is used, credit must be given to the Lawrence Livermore National Laboratory.

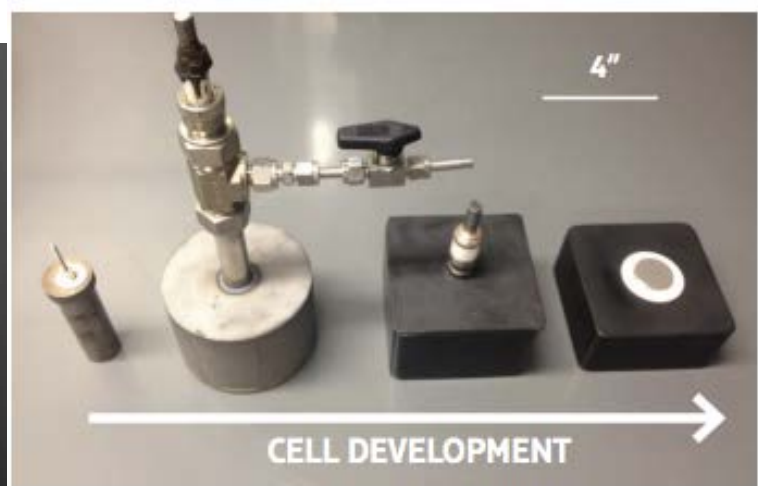






## Welcome to the Terrordome... \$/MMBTU by Energy Type











## The World's First Distributed Power Flow Controller

Smart Wire Grid's technology enables utilities to monitor and regulate power flow, as well as to shift excess power to under-utilized portions of the transmission grid.









- Properly Structured Markets Promote
  - Innovation
  - Choice
- Distributed Systems Promote
  - Reliability
  - Resilience
- Optimizing Market Efficiency and Incorporating Societal Considerations Reduces
  - Total Societal Costs
  - Risk

***Thank You***

